

We make it EASY

No-Slack® turn-key solutions matched to your requirements!

Repair



KIT-RPR-6000L

The best repair solution for replacing No-Slack® jaw, wedge and springs

*Fontaine's legendary customer support is unmatched in the aftermarket. We are your fifth wheel experts providing **REPAIR**, **REBUILD** or **REPLACE** options that save you time and money. Ask your Fontaine representative to help you match the right solution to your situation.*

Rebuild



KIT-RX-67NTL

The best rebuild solution for replacing all moving parts in your No-Slack® fifth wheel

Replace



SLTPL7000

55,000 lbs vert load
150,000 lbs drawbar pull
Cast steel housing with No-Slack® lock
Moderate-Duty On/Off Highway

The best No-Slack® replacement solution if your top plate is damaged beyond repair



Aftermarket Parts Catalog

NEW

www.fifthwheel.com

 Online Part Search

 Online Chat

Online Order Tracking 

Introduction	Page	Slide Brackets and Rails	Page
Part Number Identification	3	NWB	15
Measurements	3	LWB	16
Serial Number Location	3	LWO	17
Top Plate Options	4	ATB	18
Duty Restrictions	5	AWB	19
		AWX	20
No-Slack® Part Information		Stationary Options	
No-Slack® top plate kits	6-8	Fixed	21
Helpful Tools	8	Plate & Angled Mounts	22
No-Slack® H7 kits	9	Blocked Fifth Wheels	23
No-Slack® H(X)5092 kits....	10-11	Helpful Information	
3000 part information	12	Important Application Notes ...	24
CD700 Auto Hauler	13	Lubrication	25
Pin and Bushing Kits	14	Jaw/Wedge Adjustment	26
		Cold Weather Maintenance	27

Demand only **GENUINE** Fontaine® fifth wheels.

“Will fit” top plates simply do not give you the **No-Slack®** advantage.



SLTPL6000

New LOWER PRICE on genuine Fontaine® No-Slack® lock

Buy only the best ...
Don't settle for less!

We make it **EASY**

Fontaine's customer support is unmatched in the aftermarket. We are your fifth wheel experts: providing cost-cutting training; "How-To" videos; printed materials; digital materials... whatever it takes to help you find the fifth wheel information you need quickly and easily.



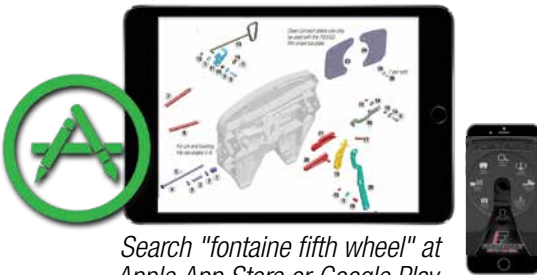
Chat at www.fifthwheel.com



Easy Model# or Serial# lookup at www.fifthwheel.com or use the mobile app!



EASY order tracking at www.fifthwheel.com or use the mobile app!



Search "fontaine fifth wheel" at Apple App Store or Google Play.



How-To Videos/Training at www.fifthwheel.com or use the mobile app!

Part Number Identification

This guide explains the nomenclature for Fontaine Fifth Wheel complete assembly part numbers.

See example part number at right:

SL6NWB675012

Release

- SL** = Side left
- SR** = Side right
- AA** = Air actuated
- BL** = Blocked left (H7 only)
- AL** = Auto-lube left
- SLE** = Electronic lock indicator left (7000 only)

Top plate model

- 6** = No-Slack® 6000
- 7** = No-Slack® 7000
- C** = 7000CC Clean Connect
- H7** = No-Slack® H7

Mounting Bracket model

- Slides*
- NWB** = Light weight slide bracket
 - LWB** = Light weight slide bracket
 - LWO** = Light weight slide bracket
 - ATB** = Slide bracket
 - AWB** = Slide bracket
 - AWX** = Slide bracket

Fixed Mounts

- BSL** = Stationary bracket mount
- FMA** = Stationary bracket mount

Plate Mounts

- PML** = Adjustable plate mount
- APB** = Adjustable plate mount
- PS5** = Stationary short plate mount

Blocked (No-Tilt) Mounts

- BLH7AWB** = Blocked Air slide bracket
- BLH7PS5** = Blocked Stationary short plate mount

Mounting height

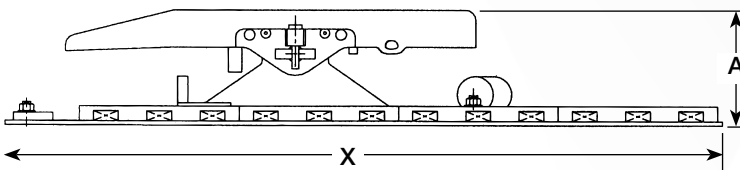
- 6750** = 6-3/4"
- Actual height from truck frame to top of fifth wheel.
- Examples:
7125 = 7-1/8"
7250 = 7-1/4"
8375 = 8-3/8"
9750 = 9-3/4"

Slide travel

- 12** = 12" slide
- Sliding fifth wheels only.
- Examples:
12 = 12" slide
24 = 24" slide
36 = 36" slide
48 = 48" slide

Measurements & Serial Number Location

How do I measure a fifth wheel?



The installed height of all Fontaine models is measured from the top of the truck frame to the top of the fifth wheel. For standard models dimension "A" is a part of the model number. For example, if dimension "A" in this diagram is 7.75 inches, it would appear in the model number as 7750 (Example: SL7AWB775024).

How do I find the serial number

Serial number engraved directly into the right side of fifth wheel skirt. Note: position 5 and 6 of the serial number indicates the year built. Serial number is always 9 digits.



No-Slack® right side view serial number location



No-Slack® Top Plate Options

No-Slack® 6000 series

50,000 pounds vertical load.
150,000 pounds drawbar pull.

The innovative 6000 series fifth wheel features the patented self-adjusting No-Slack® locking mechanism with a positive secondary lock that can only be released by pulling the handle. A locking trigger helps minimize high-hitching to reduce tractor, trailer and tire damage. The lock automatically self-adjusts to the trailer kingpin for a smoother ride, lower maintenance costs and longer component life. Rated for standard to moderate duty on-highway use only, including tankers.

Part Number: **SLTPL6000**



No-Slack® 7000 series

55,000 pounds vertical load.
150,000 pounds drawbar pull.

The 7000 series offers all the benefits of our 6000 series, but in a cast design rather than pressed steel. It features the self-adjusting No-Slack® locking mechanism. Rated for moderate to severe duty for both on-highway and off-highway applications.

Part Number: **SLTPL7000**



No-Slack® 7000CC series Clean Connect™

55,000 pounds vertical load.
150,000 pounds drawbar pull.

The 7000CC series Clean-Connect™ offers all the benefits of the 7000 series fifth wheels plus the added benefit of a grease free top plate surface. With Clean-Connect™ technology the fifth wheel no longer requires grease to lubricate between the top plate surface and the trailer coupling plate. This eliminates the labor costs, materials and downtime associated with greasing the top plate surface. Rated for moderate duty for on-highway applications.

Part Number: **SLTPL7000CC**



No-Slack® H7 Heavy Duty Series

Rating on AWB mounts **Rating on PS5 and AWX mounts**

62,500 lbs vertical load 70,000 lbs vertical load
150,000 pounds drawbar 200,000 pounds drawbar pull

The H7 Series offers all the benefits of No-Slack® technology in a steel reinforced cast housing. This rugged workhorse is rated for extra heavy-duty to severe-duty in both on-highway and off-highway applications. It's also available as a blocked fifth wheel to accommodate frameless dump applications.

Part Number: **SLTPLH7**



Duty Class Restrictions

With the Fontaine Fifth Wheel complete product line you can easily select the perfect fifth wheel for your application. We offer top plates and mounting options in a wide variety of sizes to handle even the most demanding applications.

To specify the right fifth wheel for your application two factors must be considered: load capacity and service conditions.

“Weight” refers to the amount of weight that a fifth wheel can handle. “Road type” refers to the operating environment and the type of equipment used in an application. “Travel type” refers to mileage between stops.

Standard Duty	
Weight:	Less than 95,000 lbs (43,000 kgs) gross combination weight (GCW)
Road type:	100% on-highway application on maintained concrete or asphalt roads
Travel type:	More than 30 miles between each couple
Axle limitation:	Maximum number of towed axles equals 3

Moderate duty (on-highway)	
Weight:	Less than 115,000 lbs (52,000 kgs) gross combination weight (GCW)
Road type:	100% on-highway application on maintained concrete or asphalt roads
Travel type:	No minimum mileage between couples
Axle limitation:	Maximum number of towed axles equals 4

Severe duty (on-highway)	
Weight:	More than 115,000 lbs (52,000 kgs) gross combination weight (GCW)
Road type:	Less than 10% off-highway application on maintained concrete, asphalt, gravel or crushed rock roads
Travel type:	No minimum mileage between couples.
Axle limitation:	No axle limitations

You don't choose a top plate based on “weight” only. Consider service conditions because a heavy load pulled on a paved road places less stress on a fifth wheel than a lighter load pulled in severe off-highway conditions.

The duty class restriction chart, top plate styles chart (page 4), and mounting bracket model chart (page 3) can be used as a guide to help you select the right fifth wheel.

Fontaine has an application guide (LT-076) that can be obtained at: www.fifthwheel.com (Choose “Support” and then “Helpful information”).

If you need further assistance contact Fontaine Fifth Wheel at: 800-874-9780.



On-line selection guide is available. Scan code or go to: www.fifthwheel.com Choose “Support” then choose “Choosing the right fifth wheel”

Moderate duty (off-highway)	
Weight:	Less than 115,000 lbs (52,000 kgs) gross combination weight (GCW)
Road type:	Less than 10% off-highway application on maintained concrete, asphalt, gravel or crushed rock roads
Travel type:	No minimum mileage between couples
Axle limitation:	Maximum number of towed axles equals 4

Severe duty (off-highway)	
Weight:	More than 115,000 lbs (52,000 kgs) gross combination weight (GCW)
Road type:	Any off-highway application on all road types including non-maintained roads
Travel type:	No minimum mileage between couples
Axle limitation:	No axle limitations
Special applications:	All logging, mining and oil field applications fall into this category regardless of anticipated weight, road type or number of axles



No-Slack® Top Plate Kits

No-Slack® NT/6000/7000/7000CC

Repair

Repair kit (KIT-RPR-6000L or R)

Item	Description	Qty.
⑥	Bumper spring	1
⑦	Handle spring	1
③⑦	Timer spring	1
②①	Step jaw	1
②②	Wedge	1
⑩	Bushing, 7/16"	1
⑮	Bushing, 5/16"	1
⑰	Bushing, 1 1/4"	1
⑫	Hex lock nut, 1/2" - 13	3

Spring kit (KIT-SPRING)

⑥	Bumper spring	1
⑦	Handle spring	1
⑰	Timer spring	1

Wedge-stop rod kit (KIT-ROD-1108)

①	Wedge-stop rod nut	1
②	Flat washer, 5/8" I.D.	2
③	Wedge-stop rod spring	1
④	Wedge-stop rod	1
⑤	Cotter pin, 3/16" x 1"	1

Secondary lock kit (KIT-LAT-6000L or R)

⑦	Handle spring	1
⑧	Hex head bolt, 1/2" - 13	1
⑨	Flat washer, 1/2" I.D.	2
⑩	Bushing, 7/16"	1
⑪	Secondary lock	1
⑫	Hex lock nut, 1/2" - 13	1
⑤	Cotter pin, 3/16" x 1"	1

Pull handle kit (KIT-PUL-6000L or R)

⑬	Pull handle	1
⑭	Flat washer, 1/2" I.D.	1
⑤	Cotter pin, 3/16" x 1"	1

Bumper kit (KIT-BPR-6000L or R)

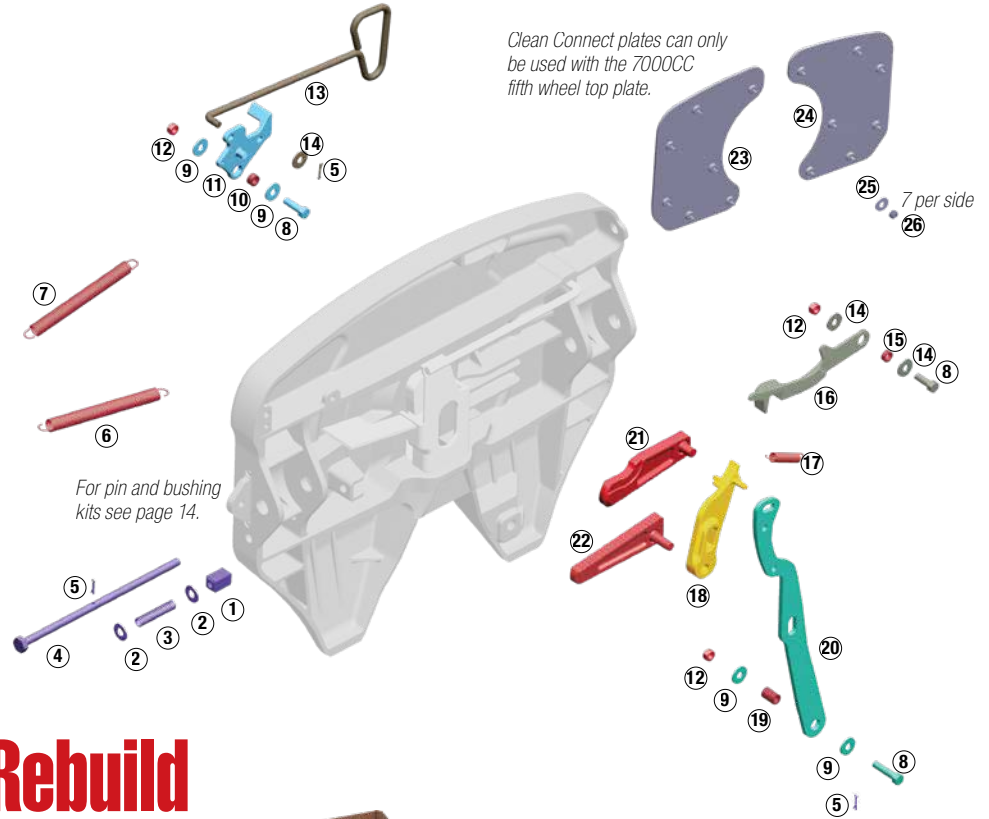
⑫	Hex lock nut, 1/2" - 13	1
⑭	Flat washer, 1/2" I.D.	2
⑮	Bushing	1
⑧	Hex head bolt, 1/2" - 13	1
⑯	Bumper	1
⑥	Bumper spring	1

Timer kit (KIT-TMR-6000L or R)

⑰	Timer spring	1
⑱	Timer	1
⑫	Hex lock nut, 1/2" - 13	1
⑤	Hair pin cotter	1

Operating handle kit (KIT-OPR-6000)

⑩	Bushing, 7/16"	1
⑮	Bushing, 5/16"	1
⑰	Bushing, 1 1/4"	1
⑫	Hex lock nut, 1/2" - 13	3
⑨	Flat washer, 1/2" I.D.	2
⑧	Hex head bolt, 1/2" - 13	1
⑳	Operating handle	1
⑤	Hair pin cotter	1



Rebuild

Part number: KIT-RX-67NTL

Major rebuild kit for left side (driver) handle release NT/6000/ 7000/ 7000CC.

Kit does not include bracket pins, bushings or Clean Connect plate kits.

- 7 kits shown at left combined in 1 saves you time and money
- Parts are arranged in the sequence for easy installation
- Complete instructions and link to video
- Reduce inventory
- Keep all the benefits of No-Slack® technology



7000CC Options

Clean Connect plate kits (7000CC)

Item	Description	Qty.
(CCR-PLATES-R)		
⑳	Right CC plate	1
㉕	Flat washer	7
㉖	Hex lock nut	7
(CCR-PLATES-L)		
㉔	Left CC plate	1
㉕	Flat washer	7
㉖	Hex lock nut	7

Replace

Replace or upgrade your fifth wheel top plate.

7000
SLTPL7000 (Driver side release)
SRTPL7000 (Passenger side)
AATPL7000 (Air Actuated)

6000
SLTPL6000 (Driver side release)
SRTPL6000 (Passenger side)

7000CC (Clean Connect)
SLTPL7000CC (Driver side release)
AATPL7000CC (Air Actuated)

NT*
SLTPLUNT (Driver side release)
SRTPLUNT (Passenger side)
*Replaces NT and 3000 models only.

For ratings see page 4.

For pin and bushing kits see pages 14.

No-Slack® Top Plate Kits

No-Slack® NT/6000/7000/7000CC

Repair

Repair kit (KIT-RPR-6000L or R)



Item	Qty.
Bumper spring	1
Handle spring	1
Timer spring	1
Step jaw	1
Wedge	1
Bushing, 7/16"	1
Bushing, 5/16"	1
Bushing, 1 1/4"	1
Hex lock nut, 1/2" - 13	3

Secondary lock kit (KIT-LAT-6000L or R)



Item	Qty.
Handle spring	1
Hex head bolt, 1/2" - 13	1
Flat washer, 1/2" I.D.	2
Bushing, 7/16"	1
Secondary lock	1
Hex lock nut, 1/2" - 13	1
Cotter pin, 3/16" x 1"	1

Pull handle kit (KIT-PUL-6000L or R)



For H7 pull handle
see page 8.

Item	Qty.
Pull handle	1
Flat washer, 1/2" I.D.	1
Cotter pin, 3/16" x 1"	1

Timer kit (KIT-TMR-6000L or R)



Item	Qty.
Timer spring	1
Timer	1
Hex lock nut, 1/2" - 13	1
Hair pin cotter	1

Wedge-stop rod kit (KIT-ROD-1108)



Item	Qty.
Wedge-stop rod nut	1
Flat washer, 5/8" I.D.	2
Wedge-stop rod spring	1
Wedge-stop rod	1
Cotter pin, 3/16" x 1"	1

Spring kit (KIT-SPRING)



Item	Qty.
Bumper spring	1
Handle spring	1
Timer spring	1

Bumper kit (KIT-BPR-6000L or R)



Item	Qty.
Hex lock nut, 1/2" - 13	1
Flat washer, 1/2" I.D.	2
Bushing	1
Hex head bolt, 1/2" - 13	1
Bumper	1
Bumper spring	1

Operating handle kit (KIT-OPR-6000)



For H7 operating
handle see page 8.

Item	Qty.
Bushing, 7/16"	1
Bushing, 5/16"	1
Bushing, 1 1/4"	1
Hex lock nut, 1/2" - 13	3
Flat washer, 1/2" I.D.	2
Hex head bolt, 1/2" - 13	1
Operating handle	1
Hair pin cotter	1



No-Slack® Top Plate Kits

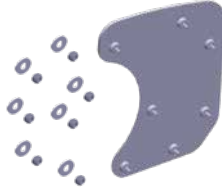
No-Slack® NT/6000/7000/7000CC series top plate kits

Options

7000CC Kit Options

Left Clean Connect Plate kit

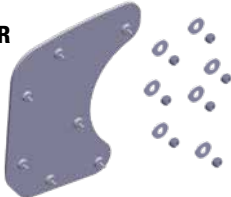
Part number:
CCR-PLATES-L



Item	Qty.
Left CC plate	1
Flat washer	7
Hex lock nut	7

Right Clean Connect Plate kit

Part number:
CCR-PLATES-R



Item	Qty.
Right CC plate	1
Flat washer	7
Hex lock nut	7

Air actuated kit

Part number:
KIT-AA-6000L or KIT-AA-6000R

This kit includes the parts mounted to the fifth wheel. If you are upgrading from manual to air actuated you will also need KIT-AIR-DASH which includes the parts required to complete the in-dash installation.



Description	Quantity
Hex head bolt	1
Hex lock nut	1
Air cylinder	1
Mini-matic jumbo exhaust valve (VLV-254)	1
Hex lock nut	1
Flat washer	1
Shoulder bolt	1
Springs	2

17-3/8" dimension shown for the air cylinder. 1/2" diameter holes.

Part number:
KIT-AIR-DASH



Kit to complete the in-dash installation.

Part number:
KIT-AIR-COIL

Parts required to connect the air actuated fifth wheel or fifth wheel air sliders to the air system.



Part number:
VLV-PUL

Pull valve used in dash



Helpful Tools

After a rebuild don't forget to properly adjust your fifth wheel. See page 26.

Part number:
KITKPT

Test kingpin is an excellent tool for jaw and wedge adjustment (see page 26).



Part number:
KIT-FRX-STAND



Repair and display stand. Top plate is not included.

No-Slack® Top Plate Kits

No-Slack® H7 series

Repair

Repair kit (KIT-RPR-6000L)

Item	Description	Qty.
⑥	Bumper spring	1
⑦	Handle spring	1
③⑦	Timer spring	1
②①	Step jaw	1
②②	Wedge	1
⑩	Bushing, 7/16"	1
⑮	Bushing, 5/16"	1
⑰	Bushing, 1 1/4"	1
⑫	Hex lock nut, 1/2" - 13	3

Spring kit (KIT-SPRING)

⑥	Bumper spring	1
⑦	Handle spring	1
⑰	Timer spring	1

Wedge-stop rod kit (KIT-ROD-1108)

①	Wedge-stop rod nut	1
②	Flat washer, 5/8" I.D.	2
③	Wedge-stop rod spring	1
④	Wedge-stop rod	1
⑤	Cotter pin, 3/16" x 1"	1

Secondary lock kit (KIT-LAT-6000L)

⑦	Handle spring	1
⑧	Hex head bolt, 1/2" - 13	1
⑨	Flat washer, 1/2" I.D.	2
⑩	Bushing, 7/16"	1
⑪	Secondary lock	1
⑫	Hex lock nut, 1/2" - 13	1
⑤	Cotter pin, 3/16" x 1"	1

Pull handle kit (KITPULH7)

⑬	Heavy Duty Pull Handle	1
⑫	Hex lock nut, 1/2" - 13	1

Bumper kit (KIT-BPR-6000)

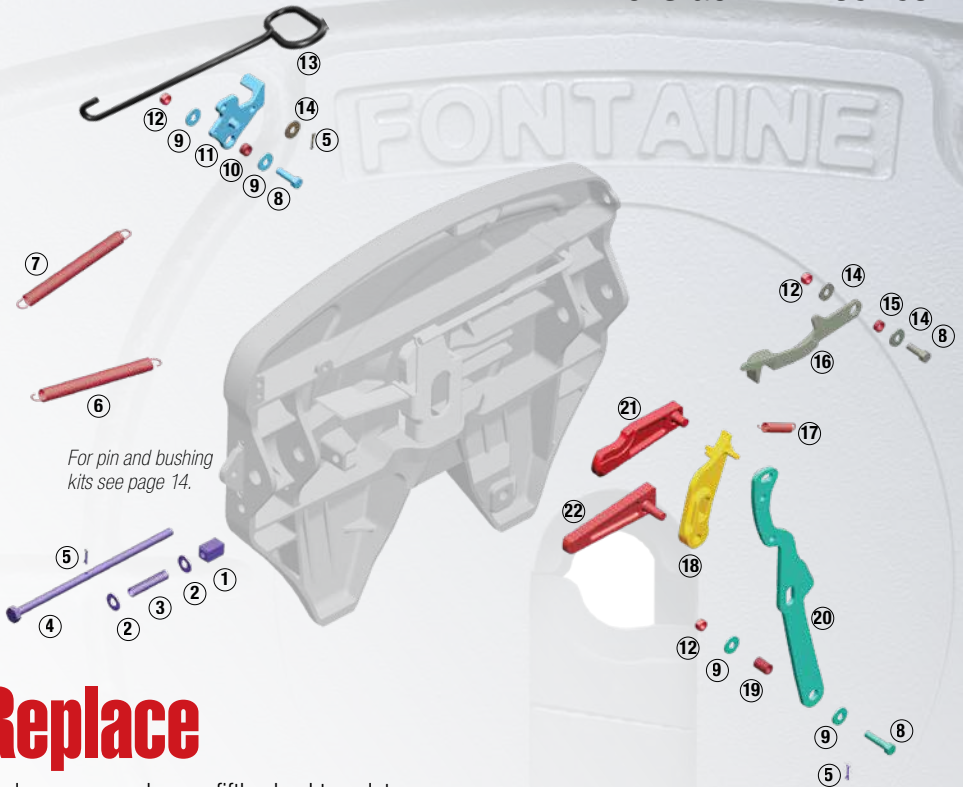
⑫	Hex lock nut, 1/2" - 13	1
⑭	Flat washer, 1/2" I.D.	2
⑮	Bushing	1
⑧	Hex head bolt, 1/2" - 13	1
⑯	Bumper	1
⑥	Bumper spring	1

Timer kit (KIT-TMR-6000L)

⑰	Timer spring	1
⑱	Timer	1
⑫	Hex lock nut, 1/2" - 13	1
⑤	Hair pin cotter	1

Operating handle kit (KITOPRH7)

⑩	Bushing, 7/16"	1
⑮	Bushing, 5/16"	1
⑰	Bushing, 9/16"	1
⑫	Hex lock nut, 1/2" - 13	3
⑨	Flat washer, 1/2" I.D.	2
⑧	Hex head bolt, 1/2" - 13	1
⑳	Operating Handle	1
⑤	Hair pin cotter	1



For pin and bushing kits see page 14.

Replace

Replace or upgrade your fifth wheel top plate.



H7 Heavy Duty
SLTPLH7 (Driver side release)

H7 is the recommended replacement for H5092 and X5092

H7 Repair Kits

Operating handle kit (KITOPRH7)

Item	Qty.
Bushing, 7/16"	1
Bushing, 5/16"	1
Bushing, 9/16"	1
Hex lock nut, 1/2" - 13	3
Flat washer, 1/2" I.D.	2
Hex head bolt, 1/2" - 13	1
Heavy Duty Operating Handle	1
Hair pin cotter	1

Pull handle kit (KITPULH7)

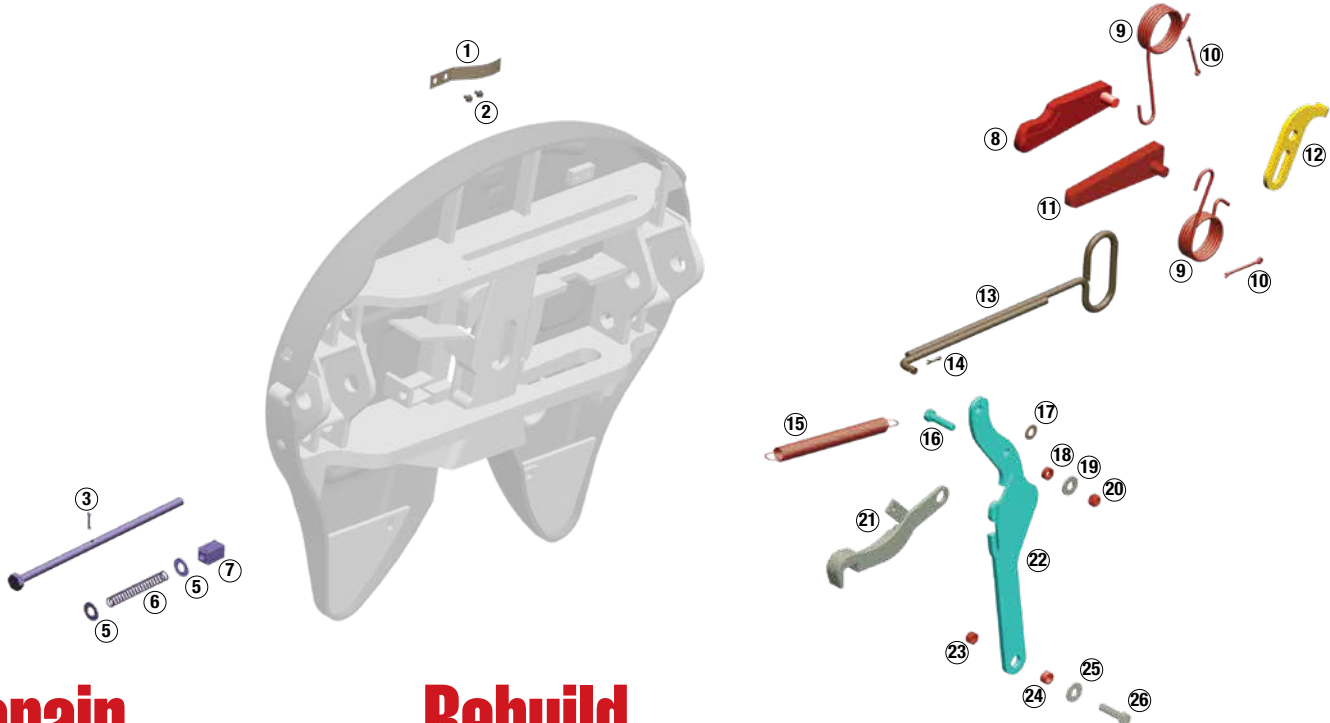
Item	Qty.
Heavy Duty Pull Handle	1
Hex lock nut, 1/2" - 13	1

With the exception of the two kits above, H7 uses same kits as No-Slack on page 6.



No-Slack® Top Plate Kits

H5092/X5092 series



Repair

Repair kit (KIT-RPR-5092L or R)

Item	Description	Qty.
⑧	Step jaw	1
⑨	Jaw and wedge spring	2
⑩	Cotter pin, 1/4" x 3"	2
⑪	Wedge	1
⑮	Bumper spring	1
⑱	Bushing, 5/16"	1
⑲	Hex lock nut, 1/2" - 13	1
⑳	Bushing, 7/16"	1
㉑	Hex lock nut, 1/2" - 13	1

Wedge-stop rod kit (KIT-ROD-1108)

Item	Description	Quan.
③	Cotter pin, 3/16" x 1"	1
④	Wedge-stop rod	1
⑤	Flat washer, 5/8" I.D.	2
⑥	Wedge-stop rod spring	1
⑦	Wedge-stop rod nut	1

Pull handle kit (KIT-PUL-5092)

Item	Description	Quan.
①	Leaf spring	1
②	Self tapping screw	2
⑬	Pull handle	1
⑭	Cotter pin, 3/16" x 1"	1
⑰	Flat washer, 1/2" I.D.	1

Timer kit (KIT-TMR-134L or R)

Item	Description	Quan.
⑫	Timer	1
⑱	Bushing 5/16"	1
⑲	Hex lock nut, 1/2" - 13	1
㉑	Bushing 7/16"	1

Rebuild

Part number: KIT-RX-5092L

Major rebuild kit for left side (driver) handle release H5092 and X5092 top plates.

Kit does not include bracket pins, bushings.



- Multiple kits combined in one saves you money
- Parts are arranged in the sequence you need them
- Complete instructions and link to video to make rebuild easy
- Reduce inventory
- Keep all the benefits of No-Slack® technology

Replace



H7 Heavy Duty
SLTPLH7 (Driver side release)

- Excellent replacement for H5092 and X5092 fifth wheel top plates
- Mounts on existing H5092/X5092 slides and brackets
- 70,000 lbs vertical load
- 150,000 to 200,00 lbs drawbar pull
- Improved No-Slack® locking mechanism

Bumper kit (KIT-BPR-5092L or R)

Item	Description	Quan.
⑪	Wedge	1
⑮	Bumper spring	1
⑱	Bushing, 5/16"	1
㉑	Bumper	1
⑲	Hex lock nut, 1/2" - 13	1
⑲	Bushing, 7/16"	1
㉑	Flat washer, 1/2" I.D.	1
㉑	Hex head bolt, 1/2" - 13	1

Operating handle kit (OPR-5000-SL)

Item	Description	Quan.
⑱	Hex head bolt, 1/2" - 13	1
⑱	Bushing 5/16"	1
⑲	Flat washer, 1/2" I.D.	1
⑲	Hex lock nut, 1/2" - 13	1
㉑	Operating handle	1
⑲	Hex lock nut, 1/2" - 13	1
⑲	Bushing 7/16"	1
⑲	Flat washer, 1/2" I.D.	1
㉑	Hex head bolt, 1/2" - 13	1

No-Slack® Top Plate Kits

H5092/X5092 series

Repair

Repair kit (KIT-RPR-5092L or R)



Item	Qty.
Step jaw	1
Jaw and wedge spring	2
Cotter pin, 1/4" x 3"	2
Wedge	1
Bumper spring	1
Bushing, 5/16"	1
Hex lock nut, 1/2" - 13	1
Bushing, 7/16"	1
Hex lock nut, 1/2" - 13	1

Pull handle kit (KIT-PUL-5092)



Item	Qty.
Leaf spring	1
Self tapping screw	2
Pull handle	1
Cotter pin, 3/16" x 1"	1
Flat washer, 1/2" I.D.	1

Bumper kit (KIT-BPR-5092L or R)



Item	Qty.
Wedge	1
Bumper spring	1
Bushing, 5/16"	1
Bumper	1
Hex lock nut, 1/2" - 13	1
Bushing, 7/16"	1
Flat washer, 1/2" I.D.	1
Hex head bolt, 1/2" - 13	1

Wedge-stop rod kit (KIT-ROD-1108)



Item	Qty.
Wedge-stop rod nut	1
Flat washer, 5/8" I.D.	2
Wedge-stop rod spring	1
Wedge-stop rod	1
Cotter pin, 3/16" x 1"	1

Timer kit (KIT-TMR-134L or R)



Item	Qty.
Timer	1
Bushing 5/16"	1
Hex lock nut, 1/2" - 13	1
Bushing 7/16"	1

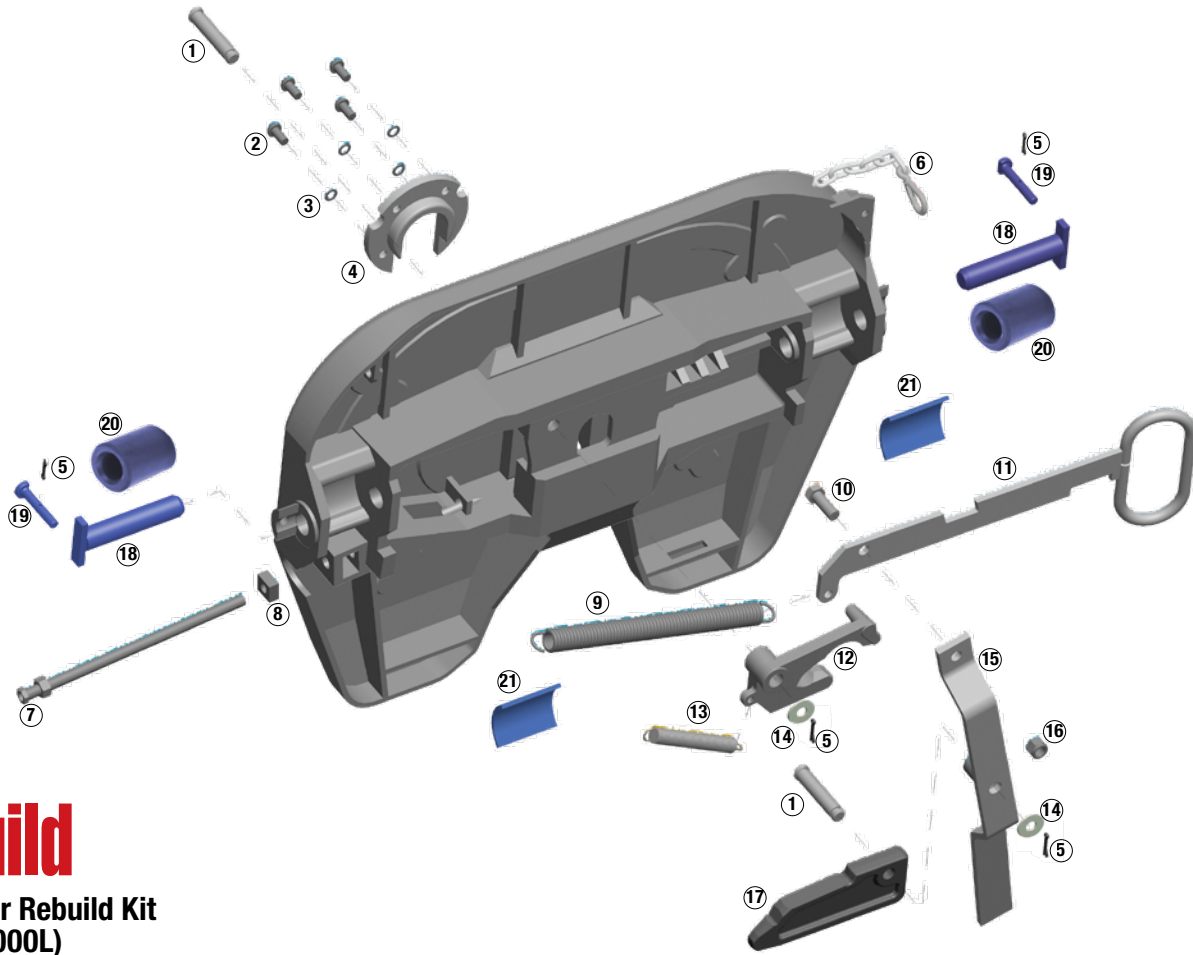
Operating handle kit (OPR-5000-SL)



Description	Qty.
Hex head bolt, 1/2" - 13	1
Bushing 5/16"	1
Flat washer, 1/2" I.D.	1
Hex lock nut, 1/2" - 13	1
Operating handle	1
Hex lock nut, 1/2" - 13	1
Bushing 7/16"	1
Flat washer, 1/2" I.D.	1
Hex head bolt, 1/2" - 13	1



3000 Series Top Plate Kits



Rebuild

3000 Major Rebuild Kit (KIT-RX-3000L)



Item	Description	Qty.
①	Pivot Pin	2
②	Hex Socket Button Head Screw, M12X25MM	4
③	Flat Washer, M12	4
④	Wear Ring	1
⑤	Cotter Pin	2
⑥	Security Clip	1
⑦	Adjustment Rod	1
⑧	Adjustment Rod Nut, M16 Square	1
⑨	Main Spring	1
⑩	Hex Head Bolt, M16 X 40MM	1
⑪	Pull Handle	1
⑫	Rotating Locking Jaw	1
⑬	Jaw Spring	1
⑭	Washer, 3/4"	2
⑮	Operating Handle	1
⑯	Nylok Nut, M16	1
⑰	Locking Wedge	1

Replace



NT
SLTPLUNT (*Driver side release*)
SRTPLUNT (*Passenger side*)

Bracket pin kit (KIT-PIN-3000)

Item	Description	Qty.
⑤	Cotter pin	2
⑰	Bracket pin	2
⑱	Bracket retainer pin	2
⑳	1-piece bushing	2

Bushing kit (BSH-3000)

Item	Description	Qty.
⑳	1-piece bushing	2
㉑	Bracket liners	2

CD 700 Series Custom Duty Top Plate Kits

Repair

Handle kit for 700 (KIT-CD-7HDL)

Item	Description	Quantity
⑦	Cotter pin, 3/16" x 1"	3
⑩	Lock pin	1
⑪	Hair pin cotter	1
⑫	Chain	1
⑬	Handle grip	1
⑭	Pull handle	1
⑮	Bushing, 7/16"	1
⑯	Hex head flanged bolt, nut	1
⑰	Flat head socket, 5/8"-11 x 3-1/2", grade 5	1
⑲	Bushing	1
⑳	Operating handle	1
㉑	Flat washer, 5/8", plain	1
㉒	Hex lock nut, 5/8" -11, grade "B"	1
㉓	Cotter pin, 5/32" x 1"	1

Wedge-stop rod kit (KIT-CD-ROD)

Item	Description	Quantity
①	Wedge-stop rod	1
②	Wedge-stop rod nut	1
③	Wedge-stop rod spring	1

Bracket pin kit (KIT-CD-PIN-224)

Item	Description	Quantity
⑤	Bracket pin	2
⑥	Bracket bushing	2
⑦	Cotter pin, 3/16" x 1"	2
⑧	Bracket retainer pin	2

Lock pin kit for 700 (KIT-CD7-LOCKPIN)

Lock pin kit for 600 (KIT-CD6-LOCKPIN)

Item	Description	Quantity
⑩	Lock pin	1
⑪	Hair pin cotter	1
⑫	Chain	1

Rebuild

Rebuild kit (KIT-RPR-S500)

Item	Description	Quantity
④	Jaw spring	1
⑦	Cotter pin, 3/16" x 1"	3
⑨	Pull handle spring set	1
⑮	Bushing, 7/16"	1
⑯	Hex head flanged bolt, nut	1
⑰	Flat head socket, 5/8"-11 x 3-1/2", grade 5	1
⑱	Jaw and wedge set	1
⑲	Bushing	1
㉑	Flat washer, 5/8", plain	1
㉒	Hex lock nut, 5/8" -11, grade "B"	1
㉓	Cotter pin, 5/32" x 1"	1
㉔	Flat washer 3/4", plain	1
㉕	Clevis pin, 3/4" x 3"	1
㉖	Hex lock nut, 3/8"-16	2
㉗	Rod guide	1
㉘	Flat head bolt, 5/8-11 x 3-1/2"	2

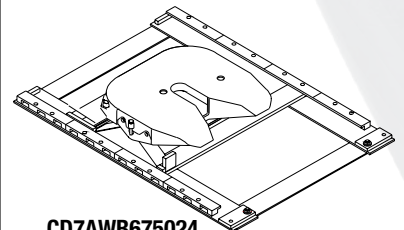
Custom Duty Service Parts

- SLCD7FM5750 . . . CD700 with bracket for stationary mounting
(some welding required)
- CD7AWB675024 . . . CD700 with a 6.75" air slide bracket
and 24" slide rail
- SLTPLCD700-D5 . . . CD700 replacement fifth wheel top plate
- BKTCD Bracket for the SLCD7FM5750
- KIT-CD-PIN-224 . . . Pin and Bushing kit
- CD-BSH-242 Bushing kit (pair)
- CDBKTAWB6PT . . . CD air slide bracket 6.75" height
- CDSLR24B 24" CD side rail
- CYL-COMP AWB air cylinder
- KITRPAWB Locking wedge (pair)

Replace



SLTPLCD700-D5 (Driver side release)



CD7AWB675024
Complete Assembly



Pin and Bushing Kits

Bracket Pin and Bushing Kits

Bracket pin kit (KIT-PIN-LLB)



Item	Qty.
2-piece bushing	2 Pairs
Bracket pin	2
Bracket retainer pin	2
Cotter pin	2
Bracket liner	2

Bracket pin kit (KIT-PIN-191)



Item	Qty.
1-piece bushing	2
Bracket pin	2
Bracket retainer pin	2
Cotter pin	2

Bracket pin kit (KIT-PIN-UNT)



Item	Qty.
1-piece bushing	2
Bracket pin	2
Bracket retainer pin	2
Cotter pin	2
Bracket Liner	2

Bracket pin kit (KIT-PIN-3000)



Item	Qty.
Bracket liners	2
1-piece bushing	2
Bracket pin	2
Bracket retainer pin	2
Cotter pin	2

Bushing Kits

Bushing kit (BSH-LLB)



Item	Qty.
2-piece bushing	2 Pairs
Bracket liner	2

Bushing kit (BSH-150)



Item	Qty.
1-piece bushing	2

Bushing kit (BSH-3000)



Item	Qty.
1-piece bushing	2
Bracket liners	2

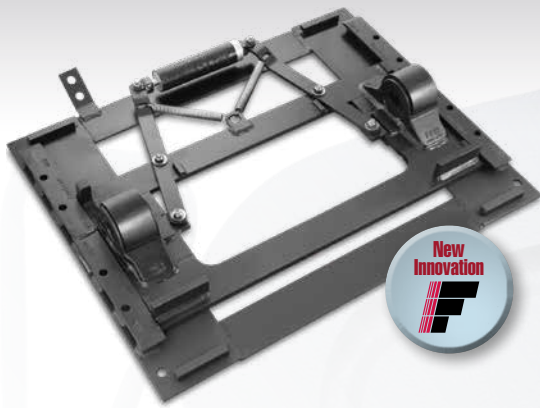
Bracket Pin and Bushing Kit Guide

Top Plate Mount	Top Plate	Bracket Pin Kit	Bushing Kit
Sliding Brackets			
ATB	6000, 7000, 7000CC	KIT-PIN-LLB	BSH-LLB
AWB	7000, H5092, H7	KIT-PIN-191	BSH-150
AWB Blocked BLAWB	7000, H5092, H7	KIT-PIN-191	BSH-150
AWX	H5092, H7	KIT-PIN-XHD	BSH-150
LWB	6000, 7000, 7000CC	KIT-PIN-LLB	BSH-LLB
LWO	NT, 3000	KIT-PIN-UNT*	BSH-3000
MTB	6000, 7000, 7000CC	KIT-PIN-LLB	BSH-LLB
MWS	H5092, H7	KIT-PIN-191	BSH-150
NWB	6000	KIT-PIN-LLB	BSH-LLB
XPSA	X5092	KIT-PIN-XHD	BSH-150
ASB	NT, 3000	KIT-PIN-3000	BSH-3000

Top Plate Mount	Top Plate	Bracket Pin Kit	Bushing Kit
Fixed Mount/Plate Mount			
APB	NT, 3000	KIT-PIN-UNT*	BSH-3000
BSL	6000, 7000, 7000CC	KIT-PIN-LLB	BSH-LLB
BSM	6000, 7000, 7000CC	KIT-PIN-LLB	BSH-LLB
FMA	6000, 7000, 7000CC	KIT-PIN-191	BSH-150
FMA D3	6000, 7000, 7000CC	KIT-PIN-191	BSH-150
PMA	6000, 7000, 7000CC	KIT-PIN-LLB	BSH-LLB
PML	6000, 7000, 7000CC	KIT-PIN-LLB	BSH-LLB
PSA	H5092, H7	KIT-PIN-191	BSH-150
PS5	H5092, H7	KIT-PIN-191	BSH-150
PS5 Blocked (BLPS5)	H5092, H7	KIT-PIN-191	BSH-150
SMB	NT, 3000	KIT-PIN-UNT*	BSH-3000
XPSA	X5092	KIT-PIN-XHD	BSH-150

*If 3000 Series top plate on the bracket or slide, use KIT-PIN-3000.

NWB Light Weight Standard duty air slide bracket and rails



FONTAINE

Repair

Bracket pin kit (KIT-PIN-LLB)

Item Description	Qty.
Lower bracket bushing	2
Upper bracket bushing	2
Bracket pin	2
Bracket retainer pin	2
Cotter pin	2
Bracket liner	2



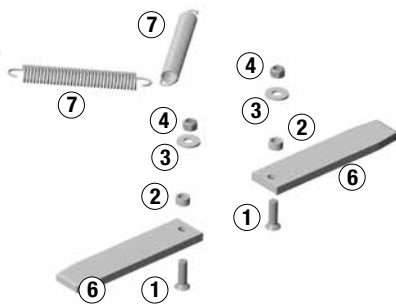
Bushing kit (BSH-LLB)

Lower bracket bushing	2
Upper bracket bushing	2
Bracket liner	2



Repair kit (KITPRNWB)

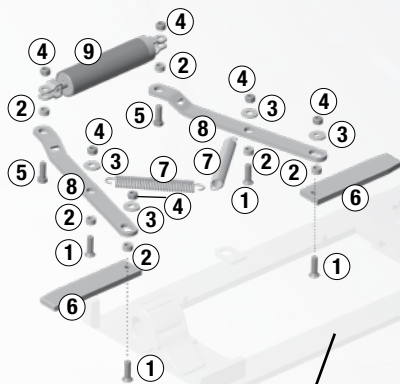
① 1/2" x 1-3/4" screw	2
② Spacer bushing	2
③ 1/2" washer	2
④ 1/2" hex lock nut	2
⑦ Spring	2
⑥ Locking wedge	2



Rebuild

Rebuild kit (KITRXNWB)

Item Description	Qty.
① 1/2" x 1-3/4" screw	4
② Spacer bushing	6
③ 1/2" washer	4
④ 1/2" hex lock nut	6
⑤ 1/2" x 1-1/2" hex bolt	2
⑥ Locking wedge	2
⑦ Spring	2
⑧ Linkage	2
⑨ Composite Air Cylinder	1

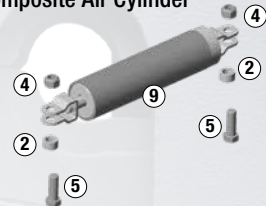


Bracket not included in kit

Replace

Cylinder kit (CYLNWB)

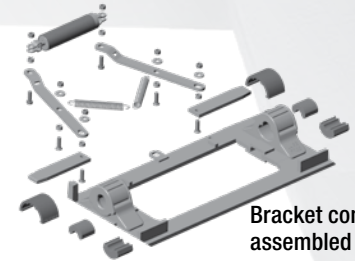
Item Description	Qty.
② Spacer bushing	2
④ 1/2" 13 Grade C hex lock nut	2
⑤ 1/2" x 1-1/2" hex bolt	1
⑨ Composite Air Cylinder	1



Air slide bracket

Part Number	Mounted Height*
BKTNWB6PT	6-3/4"
BKTNWB67T	7-3/4"
BKTNWB8PT	8-3/4"

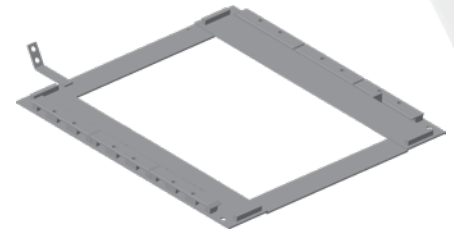
*Height is measured from top of truck frame to top of fifth wheel



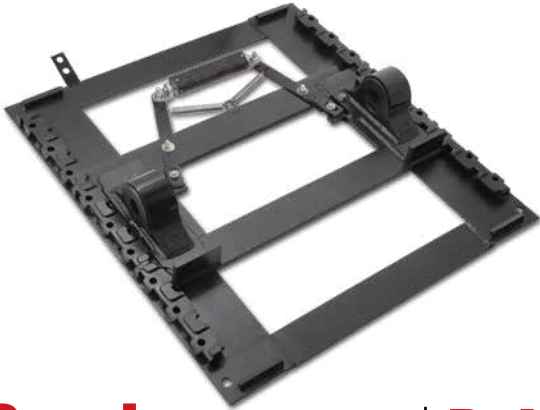
Bracket comes assembled

Slide rails

Part Number	Slide Travel	Overall Length
SLRNWB-12	12"	31"
SLRNWB-16	16"	35"
SLRNWB-24	24"	43"



LWB Light Weight Standard duty air slide bracket and rails



Repair

Bracket pin kit (KIT-PIN-LLB)

Item Description	Qty.
Lower bracket bushing	2
Upper bracket bushing	2
Bracket pin	2
Bracket retainer pin	2
Cotter pin	2
Bracket liner	2



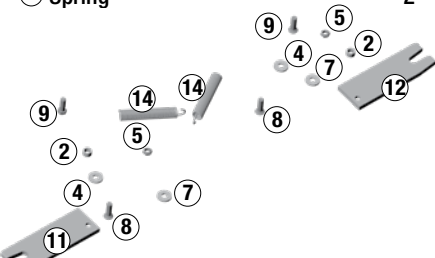
Bushing kit (BSH-LLB)

Lower bracket bushing	2
Upper bracket bushing	2
Bracket liner	2



Repair kit (KITRPLWB)

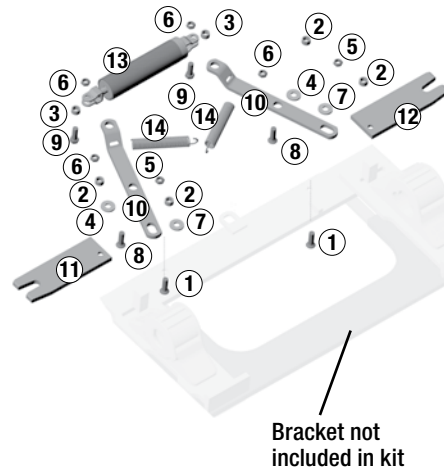
② Spacer bushing	2
④ Flat washer, 1/2" I.D., 1-3/8" O.D., plain	2
⑤ Hex nut lock, 3/8-16	2
⑦ Flat washer, 3/8" I.D., 1" O.D., plain	2
⑨ Hex head bolt, 3/8" 16 x 1-1/2", grade 5	2
⑪ Locking wedge, left	1
⑫ Locking wedge, right	1
⑭ Spring	2



Rebuild

Rebuild kit (KITRXLWB)

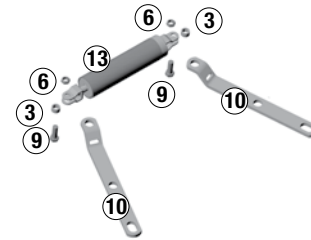
Item Description	Qty.
① Flat head bolt, 1/2"-13 x 1-3/4"	4
② Spacer bushing	4
③ Bushing	2
④ Flat washer, 1/2" I.D., 1-3/8" O.D., plain	4
⑤ Hex nut lock, 3/8-16	2
⑥ Hex nut, lock 1/2"-13, low profile	4
⑦ Flat washer, 3/8" I.D., 1" O.D., plain	2
⑧ Hex head bolt, 1/2"-13x1-1/4", grade 5	2
⑨ Hex head bolt, 3/8" 16 x 1-1/2", grade 5	2
⑩ Linkage, LWB	2
⑪ Locking wedge, left	1
⑫ Locking wedge, right	1
⑬ Air cylinder	1
⑭ Spring	2
Washer, 1/2 Type A .121	2
Washer, 1/2 Type A .132	4



Replace

Cylinder kit (CYLLWB)

Item Description	Qty.
③ Bushing	2
⑥ Hex nut, lock 1/2"-13, low profile	2
⑨ Hex head bolt, 3/8" 16 x 1-1/2", grade 5	2
⑩ Linkage, LWB	2
⑬ Composite Air Cylinder	1



Air slide bracket

Part Number	Mounted Height
BKTLWB6PT	6-3/4"
BKTLWB7PT	7-1/4"
BKTLWB8PT	8-1/4"
BKTLWB9PT	9-1/4"
BKTLWB10PT	10-1/4"

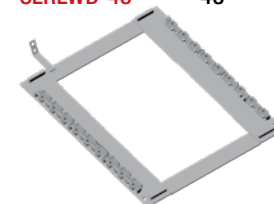
*Height is measured from top of truck frame to top of fifth wheel



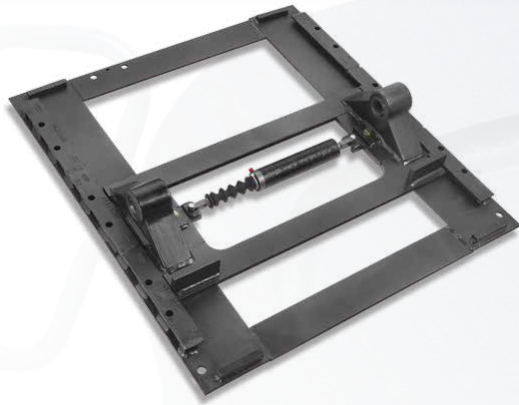
Bracket comes assembled

Slide rails

Part Number	Slide Travel	Overall Length
SLRLWB-12	12"	33"
SLRLWB-16	16"	39"
SLRLWB-24	24"	45"
SLRLWB-36	36"	57"
SLRLWB-48	48"	69"



LWO Light Weight Standard duty air slide bracket and rails



FONTAINE

Repair

**For No-Slack NT (UNT) Series
Top Plate Models**

Bracket pin kit (KIT-PIN-UNT)

Item	Qty.
1-piece bushing	2
Bracket pin	2
Bracket retainer pin	2
Cotter pin	2
Bracket Liner	2



**For 3000 Series
Top Plate Models**

Bracket pin kit (KIT-PIN-3000)

Item	Qty.
Bracket liners	2
1-piece bushing	2
Bracket pin	2
Bracket retainer pin	2
Cotter pin	2



**For No-Slack NT (UNT) and
3000 Series Top Plate Models**

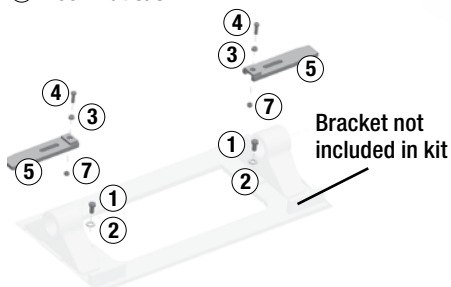
Bushing kit (BSH-3000)

Item	Qty.
Bracket liners	2
1-piece bushing	2



Repair Kit (KIT-LOC-LWO)

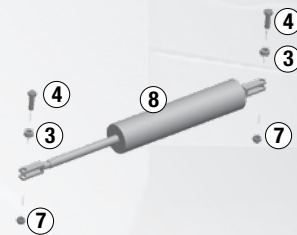
Item	Qty.
① 1/2-13 x 1.00 Hex Bolt	2
② 1/2 Washer	2
③ Spacer Bushing	2
④ 3/8-16 x 1.25" Hex Bolt	2
⑥ Locking Wedge	2
⑦ Lock Nut 3/8"	2



Replace

Cylinder kit (CYL-LWO-LWI)

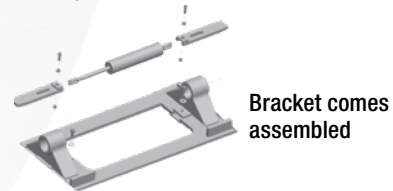
Item Description	Qty.
③ Spacer Bushing	2
④ 3/8-16 x 1.25" Hex Bolt	2
⑦ Lock Nut, 3/8-16	2
⑧ Composite Air Cylinder	1



Air slide bracket Mounted Part Number Height*

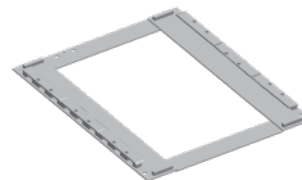
BKTLW06PT	6-3/4"
BKTLW07PT	7-3/4"
BKTLW08PT	8-3/4"

*Height is measured from top of truck frame to top of fifth wheel



Slide rails Part Number Slide Travel Overall Length

SLRLW0-12	12"	31"
SLRLW0-16	16"	35"
SLRLW0-24	24"	43"
SLRLW0-36	36"	55"
SLRLW0-48	48"	67"



FONTAINE
FIFTH WHEEL®



Repair

Bracket pin kit (KIT-PIN-LLB)

Item	Description	Qty.
	Lower bracket bushing	2
	Upper bracket bushing	2
	Bracket pin	2
	Bracket retainer pin	2
	Cotter pin	2
	Bracket liner	2



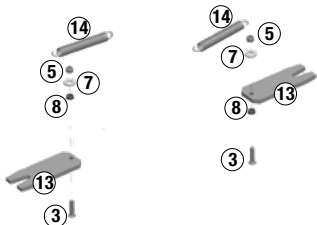
Bushing kit (BSH-LLB)

	Lower bracket bushing	2
	Upper bracket bushing	2
	Bracket liner	2



Repair kit (KITRPRATB)

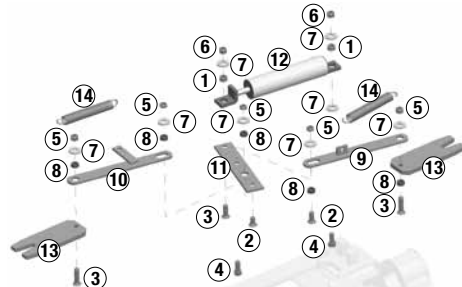
③	Flat head socket, 1/2" -13 x 2"	2
⑤	Hex jam nut, 1/2" -13, NY	2
⑦	Flat washer, 1/2" Type A, .132	2
⑧	Spacer bushing	2
⑬	Locking wedge, slide assembly	2
⑭	Locking member spring	2



Rebuild

Rebuild kit (KITRXATB)

Item	Description	Qty.
①	Spacer bushing	2
②	Flat head socket, 1/2" -13 x 1-1/2"	2
③	Flat head socket, 1/2" -13 x 2"	3
④	Hex head bolt, 1/2" -13 x 1"	2
⑤	Hex jam nut, 1/2" -13, NY	5
⑥	Hex lock nut, 1/2" -13, grade "C"	2
⑦	Flat washer, 1/2" Type A, .132	8
⑧	Spacer bushing	5
⑨	Pull bar, slide bracket	1
⑩	Pull bar, slide bracket	1
⑪	Latching lever	1
⑫	Composite Air Cylinder	1
⑬	Locking wedge, slide assembly	2
⑭	Locking member spring	2

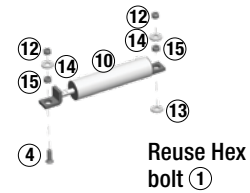


Bracket not included in kit

Replace

Cylinder kit (CYL-COMP)

Item	Description	Qty.
⑩	Composite Air Cylinder	1
④	Flat head socket, 1/2" -13 x 1-1/2", grade 5	1
⑭	Flat washer, 1/2" I.D., 1-3/8" O.D., plain	2
⑫	Hex lock nut, 1/2" -13, grade "C"	2
⑮	Bushing, 7/16"	2

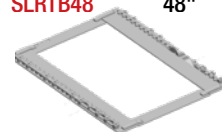


Air slide bracket Part Number	Mounted Height*
BKTATB6PT	6-3/4"
BKTATB7PT	7-3/4"
BKTATB8PT	8-3/4"
BKTATB9PT	9-3/4"
BKTATB10PT	10-3/4"

*Height is measured from top of truck frame to top of fifth wheel



Slide rails Part Number	Slide Travel	Overall Length
SLRTB12	12"	40"
SLRTB16	16"	45"
SLRTB24	24"	52"
SLRTB36	36"	64"
SLRTB48	48"	76"

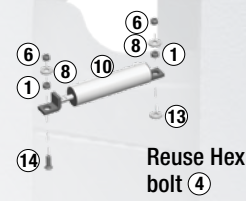




Replace

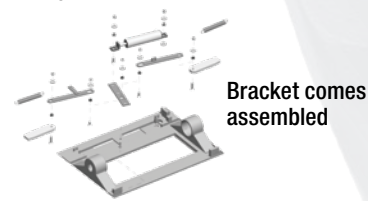
Cylinder kit (CYL-COMP)

Item	Description	Qty.
①	Spacer bushing	2
⑬	Composite Air Cylinder	1
③	Flat head socket, 1/2" -13 x 1-1/2", grade 5	1
⑦	Flat washer, 1/2" I.D., .132 Type A	2
⑥	Hex lock nut, 1/2" -13, grade "C"	2

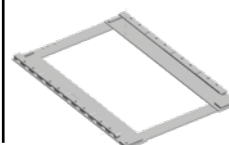


Air slide bracket Part Number	Mounted Height*
BKTAWB6PT	6-3/4"
BKTAWB7PT	7-3/4"
BKTAWB8PT	8-3/4"
BKTAWB9PT	9-3/4"
BKTAWB10PT	10-3/4"

*Height is measured from top of truck frame to top of fifth wheel



Slide rails Part Number	Slide Travel	Overall Length
SLR12B	12"	42"
SLR16B	16"	46"
SLR24B	24"	54"
SLR36B	36"	66"
SLR48B	48"	78"



Repair

Bracket pin and bushing kit (KIT-PIN-191)

Item	Qty.
1-piece bushing	2
Bracket pin	2
Bracket retainer pin	2
Cotter pin	2



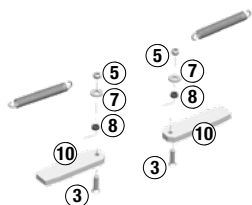
Bushing kit (BSH-150)

1-piece bushing



Repair kit (KITRPRAWB)

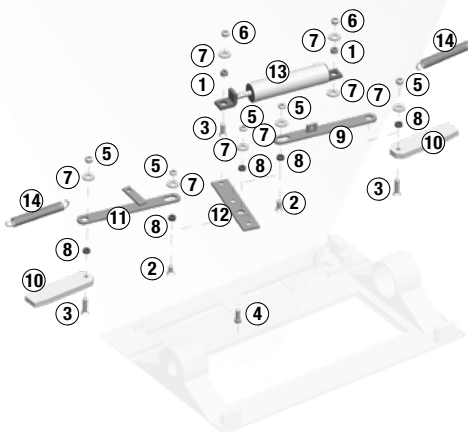
③	Flat head socket, 1/2" -13 x 2", grade 5	2
⑤	Hex jam nut, 1/2" -13, NY	2
⑦	Flat washer, 1/2" I.D., .132 Type A	2
⑧	Spacer bushing	2
⑩	Locking wedge slide assembly	2



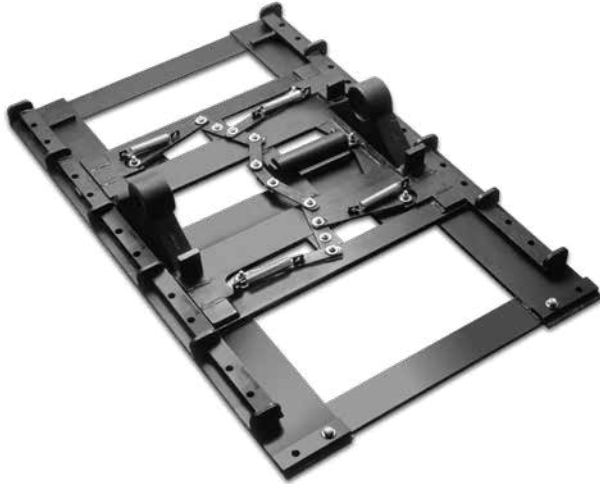
Rebuild

Rebuild kit (KITRXAWB)

Item Description	Qty.	
①	Spacer bushing	2
②	B Flat head socket, 1/2" -13 x 1", grade 5	2
③	Flat head socket, 1/2" -13 x 2", grade 5	3
④	Hex head bolt, 1/2" -13 x 1.2", grade 5	1
⑤	Hex jam nut, 1/2" -13, NY	5
⑥	Hex lock nut, 1/2" -13, grade "C"	2
⑦	Flat washer, 1/2" I.D., .132 Type A	8
⑧	Spacer bushing	5
⑨	Pull bar slide bracket	1
⑩	Locking wedge slide assembly	2
⑪	Pull bar slide bracket	1
⑫	Latching Lever	1
⑬	Composite Air Cylinder	1
⑭	Locking member spring	2



Extra heavy duty air slide bracket and rails



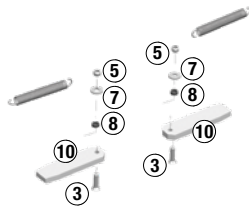
Repair

Bracket pin and bushing kit (KIT-PIN-XHD)

Item	Description	Qty.
	1-piece bushing	2
	Bracket pin	2
	Bracket retainer pin	2
	Cotter pin	2

Repair kit (KITRPAWB) 2 required for AWX

③	Flat head socket, 1/2" -13 x 2", grade 5	2
⑤	Hex jam nut, 1/2" -13, NY	2
⑦	Flat washer, 1/2" I.D., .132 Type A	2
⑧	Spacer bushing	2
⑩	Locking wedge slide assembly	2

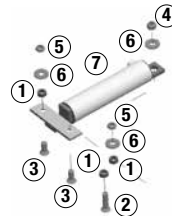


To repair use two
KITRPAWB for
double locks

Replace

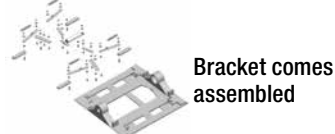
Cylinder kit (CYL-XAWX)

Item	Description	Qty.
①	Bushing, 5/16"	3
②	Hex Bolt, 1/2"-13 X 1"	2
③	Hex Bolt, 1/2"-13 X 1.5"	1
④	Hex jam nut, 1/2" -13, grade "B"	1
⑤	Hex lock nut, 1/2" -13, grade "C"	3
⑥	Washer 1/2"	
⑦	XHD Air Cylinder	1



Slide bracket Part Number	Mounted Height 5092*	Mounted Height H7*
BKTAWX9PT	9-1/2"	8-3/4"
BKTAWX10PT	10-1/2"	9-3/4"
BKTAWX11PT	11-1/2"	10-3/4"

*Height is measured from top of truck frame to top of fifth wheel



Slide rails Part Number	Slide Travel	Overall Length
SLR12X	12"	54"
SLR24X	24"	66"
SLR36X	36"	78"
SLR48X	48"	90"



Fixed and Angled Mounts

FMA fixed mount

FMA mounts (pairs)

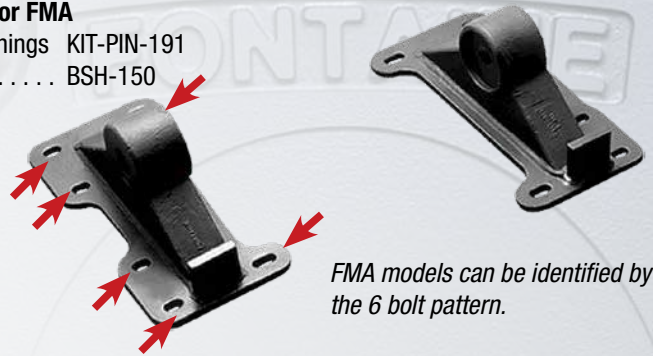
Part Number	Mounted height
BKT6FMA6375	6-3/8
BKT6FMA7375	7-3/8
BKTFMA8375	8-3/8
BKTFMA9375	9-3/8
BKTFMA10375	10-3/8

Compatible Plates

SLTPL6000
SLTPL7000
SLTPL7000CC

Repair kits for FMA

Pins and bushings	KIT-PIN-191
Bushings	BSH-150



FMA models can be identified by the 6 bolt pattern.

FMA-D3 fixed mount

FMA mounts (pairs)

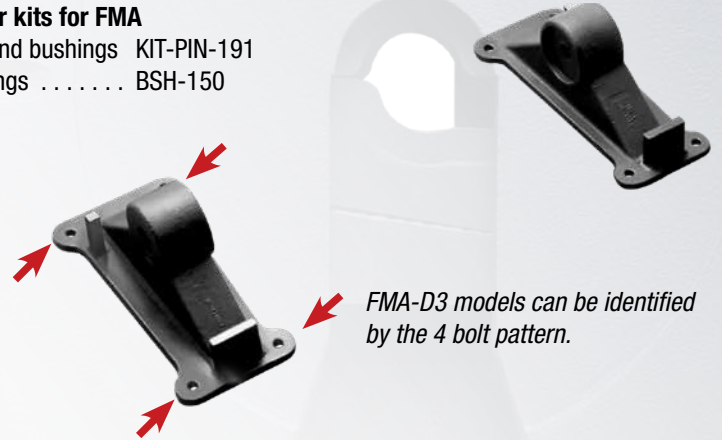
Part Number	Mounted height
BKT6FMA6375-D3*	6-3/8
BKT6FMA7375-D3*	7-3/8
BKTFMA8375-D3	8-3/8
BKTFMA9375-D3	9-3/8
BKTFMA10375-D3	10-3/8

Compatible Plates

SLTPL6000
SLTPL7000
SLTPL7000CC

Repair kits for FMA

Pins and bushings	KIT-PIN-191
Bushings	BSH-150



FMA-D3 models can be identified by the 4 bolt pattern.

*BKT6FMA-D3 and BKT6PLT brackets are used with 6000, 7000 & 7000CC top plates only and include front rocker limit blocks (example BKT6FMA6375). BKTFMA and BKPLT brackets (example BKTFMA6375) do not have front rocker limit blocks.

BSL welded fixed mount

BSL mounts (pairs)

Part number	Mounted height
BKTBSL5375	5-3/8"
BKTBSL5875	5-7/8"
BKTBSL6875	6-7/8"
BKTBSL7875	7-7/8"
BKTBSL8875	8-7/8"
BKTBSL9875	9-7/8"

Compatible Plates

SLTPL6000
SLTPL7000
SLTPL7000CC

Repair kits for BSL

Pins, bushings and bracket liners	.KIT-PIN-LLB
Bushings	.BSH-LLB

Note: Some welding required.



PML plate mount

PML mounts

Part #	Mounted height
ASYPML6250	6-1/4"
ASYPML7250	7-1/4"
ASYPML8250	8-1/4"
ASYPML9250	9-1/4"
ASYPML10250	10-1/4"

Compatible Plates

SLTPL6000
SLTPL7000
SLTPL7000CC

Repair kits for PML

Pins, bushings and bracket liners . . . KIT-PIN-LLB
 Bushings BSH-LLB



APB plate mount

APB mounts

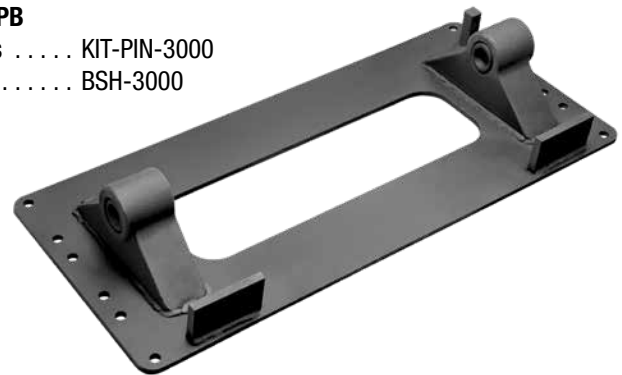
Part #	Mounted height
ASYAPB6250	6-1/4"
ASYAPB7250	7-1/4"
ASYAPB8250	8-1/4"

Compatible Plates

SLTPLUNT

Repair Kits for APB

Pins and bushings KIT-PIN-3000
 Bushings BSH-3000



PS5 plate mount

Mounting brackets

Part #	Mounted height
BKTPLT7125	7-1/4"
BKTPLT8125	8-1/4"
BKTPLT9125	9-1/4"
BKTPLT10125	10-1/4"
BKTPLT11125	11-1/4"

Compatible Plates

SLTPL6000
SLTPL7000
SLTPL7000CC
SLTPLH5092
SLTPLX5092
SLTPLH7

Repair kits for PS5

Pins and bushings KIT-PIN-191
 Bushings BSH-150

Note: To order, specify a mounting plate and mounting brackets. Both are required.



Mount	Description	Width x length	Holes per side	Hole spacing across frame	First hole measured from rear, then spacing between holes
PLT PS5	Plate short	40.00" x 23.75"	5 (for 5/8" hardware)	38"	1.88", 6.00" - 4.00" - 4.00" - 6.00"

Outboard Mounting Angles

Mounting angles 3/8" x 3" x 4" (ATB, AWB, LWB, NWB, PML, LW0, PS5)

Part Number	Inches/ Millimeters	Angle Length	Weight	Truck Frame Width
ANGP55B175	Up to 24" (610mm)	55" (1,397mm)	78 lbs (35kg)	33.25" (845mm) to 34.25" (870mm)

ANGP - indicates the angle can be cut to fit an appropriate side rail length. 55" overall width=24" slide rail length. 47" overall length =16" side rail length, and 43" overall length=12" side rail length.

Blocked (No-Tilt) Fifth Wheels

BLH7AWB blocked air slide fifth wheels (Tilt/No-Tilt Option)

Part Number Mounted Height* Description
 BLH7AWB7PT . . . 7-3/4" . . . Blocked H7 top plate with Blocked AWB bracket
 BLH7AWB8PT . . . 8-3/4" . . . Blocked H7 top plate with Blocked AWB bracket
 BLH7AWB9PT . . . 9-3/4" . . . Blocked H7 top plate with Blocked AWB bracket
 BLH7AWB10PT . . 10-3/4" . . . Blocked H7 top plate with Blocked AWB bracket
 Note: Does not include slide rails.



Removing blocking bar converts "No-Tilt" blocked fifth wheel to standard fifth wheel that can tilt.

Blocked Complete Assemblies

H7 Blocked AWB Part Number	Fifth Wheel Height*	Slide Length	Weight	H7 Blocked AWB Part Number	Fifth Wheel Height	Slide Length	Weight
BLH7AWB775012	7-3/4"	12"	602 lbs	BLH7AWB975012	9-3/4"	12"	620 lbs
BLH7AWB775016		16"	610 lbs	BLH7AWB975016		16"	628 lbs
BLH7AWB775024		24"	622 lbs	BLH7AWB975024		24"	640 lbs
BLH7AWB775036		36"	642 lbs	BLH7AWB975036		36"	660 lbs
BLH7AWB775048		48"	669 lbs	BLH7AWB975048		48"	687 lbs
BLH7AWB875012	8-3/4"	12"	611 lbs	BLH7AWB1075012	10-3/4"	12"	643 lbs
BLH7AWB875016		16"	619 lbs	BLH7AWB1075016		16"	651 lbs
BLH7AWB875024		24"	631 lbs	BLH7AWB1075024		24"	663 lbs
BLH7AWB875036		36"	651 lbs	BLH7AWB1075036		36"	683 lbs
BLH7AWB875048		48"	678 lbs	BLH7AWB1075048		48"	710 lbs

BLH7PS5 blocked plate mount fifth wheels (Tilt/No-Tilt Option)

Part Number Mounted Height* Description
 BLH7PS58375 . . . 8-3/8" . . . Blocked H7 top plate with Blocked PS5 bracket
 BLH7PS59375 . . . 9-3/8" . . . Blocked H7 top plate with Blocked PS5 bracket
 BLH7PS510375 . . 10-3/8" . . . Blocked H7 top plate with Blocked PS5 bracket

Removing blocking bar converts "No-Tilt" blocked fifth wheel to standard fifth wheel that can tilt.

Mount	Description	Width x length	Holes per side	Hole spacing across frame	First hole measured from rear, then spacing between holes
BLPS5	Plate short	40.00" x 23.75"	5 (for 5/8" hardware)	38"	1.88", 6.00" - 4.00" - 4.00" - 6.00"



Kits and parts for blocked fifth wheels

Blocking Kits (For AWB Brackets)

Blocking kit for H5092 top plate and BLHAWB bracket. KIT-BLK-SLD

Note: The bracket height must be 8 3/4" for AWB. Kit must be installed by a certified welder. See TB-030 for installation instructions.

Replacement Bar (For AWB and PS5 Brackets)

Replacement bar for Blocked H5092 and H7 top plate. BAR-396-BK
 (For BLHAWB, BLHMWS and BLHPSA brackets)



Important Application Notes

Top plate selection notes:

- For fifth wheel top plate selection guide see page 4. Air activated release styles are available on select models.

Mount selection notes:

- A sliding mount gives the owner more options. You can transfer weight between tractor axles, handle trailers with different kingpin settings, and vary vehicle combination lengths. A sliding mount fifth wheel also provides additional maneuverability, accommodates trailers with short landing gear clearance and allows the driver to extend the unit for maximum comfort when weight allows. If you choose a sliding mount, Fontaine offers a wide selection of slide lengths.

Stationary mount fifth wheels (plate or angle mounts) are an option and are ideal for applications where the trailer kingpin setting, axle loading and vehicle length all remain the same for the entire fleet. Stationary mount fifth wheels are usually lighter than sliding mount fifth wheels.

Important application notes:

- If any single restriction factor within your application is surpassed within a given duty level, the next duty level must be selected.
- For more information on standard, moderate and severe duty, please review the **duty class restrictions** on page 5.
- When selecting a fifth wheel, if the application or vehicle usage places the maximum capacity on a certain fifth wheel, then the selection of a fifth wheel with a higher capacity is advised. For example, a tractor that is at a maximum vertical load of 50,000 lbs in a moderate duty application should be using a fifth wheel with a vertical load capacity of 55,000 lbs or greater. This additional capacity should give better service life over a longer period of time.

Special applications:

- All logging, mining and oil field applications are considered severe duty. Do not select assemblies in the standard or moderate levels when a special application is designated.

Minimum static load warning:

- Minimum static load warning!!! The trailer that is attached to the fifth wheel should impose a consistent vertical load. Repeated negative loading (trying to pull the fifth wheel off of the brackets with the kingpin) is not allowed. A minimum static load applied to the fifth wheel through the trailer is 10% of the gross trailer weight. See the load rating for the specific fifth wheel for maximum vertical load values.



Van trailers



Tankers and bulk trailers



Flatbeds, stretch and stake trailers



Lowbed trailers



Framed end and frameless dump trailers

Important: Contact your OEM or Fontaine Fifth Wheel for more information on the right fifth wheel for your application. Please refer to the Fontaine Fifth Wheel warranty statement for important warranty information. Selecting assemblies in conflict with this application guide without prior written approval from Fontaine engineering voids all warranties. A copy of the Fontaine service handbook is available at www.fifthwheel.com. Click "Support" and then "Helpful information".

Lubrication Instructions

No-Slack® 6000, 7000, 7000CC, NT and H7

1 Inspect top plate (degrease if necessary). Lubricate grease channels in the top plate using a lithium complex lubricant, suitable for use in high pressure applications, such as: Nanomech: Ultra Red Trucking Grease, Mobil: XHP 320 Mine, XHP 321 Mine or equivalent (all models except Clean Connect™)

WARNING! Do not use an aftermarket lube plate (high density polyethylene) or grease packets on top of the fifth wheel or kingpin bolster plate in lieu of grease without prior approval by Fontaine.



2 Lubricate the top plate surface with a thin layer of grease—leave area around jaw and wedge free of grease (skip this step for the 7000CC Clean Connect™ model).



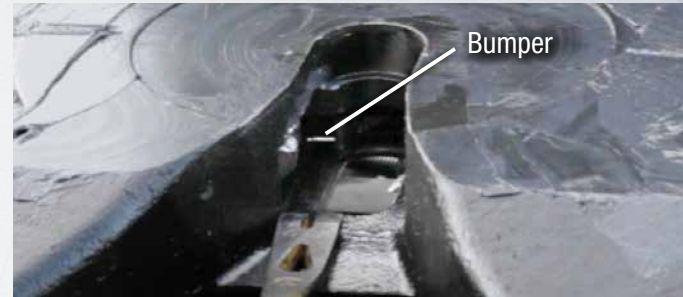
Note: For illustration purposes, red lubricant is used in these photos to show proper coverage. Your grease may have a different color.



Over-lubrication is costly and causes excessive build-up on fifth wheel components leading to lost revenue.

3 Remove any old grease from the jaw, wedge and the throat area of the fifth wheel, then close the lock and grease the jaw and wedge (all models)

Trip the locking mechanism with a pry bar by pushing the bumper off its seat. Keep hands out of the fifth wheel throat.



Separate the jaw and wedge with a screw driver and press the recommended lubricant between the serrated surfaces. Work the pull-handle back and forth to spread the lube over all surfaces. Also grease the Stationary Jaw and the Throat Area above the Stationary Jaw.

4 Grease mounting brackets (Skip this step for "LUBE FREE" models with bracket liner models)



Grease the mounting brackets. Lift the top plate up with a pry bar to ensure grease gets to the top of the brackets. (Inspect mounting bracket base, and if "LUBE FREE" is cast into the bracket skip this step.

These models have bracket liners and do not require lubrication. In this case inspect linings for wear). In cold weather applications please refer to page 25.



Jaw & Wedge Adjustment

No-Slack® 6000, 7000, 7000CC, NT and H7

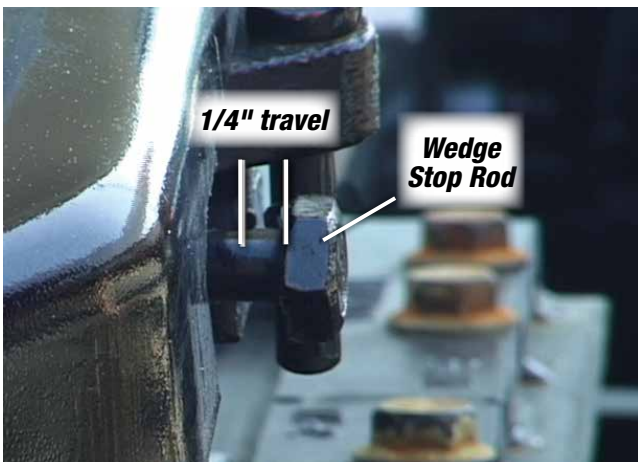
1 Insert test kingpin into fifth wheel throat to activate the lock to activate the lock



Insert a dimensionally correct test kingpin tool into the throat of the fifth wheel. Carefully push the kingpin in until the locking mechanism is activated. Keep your hands out of the fifth wheel throat.



2 Adjust wedge stop rod



Check the travel of the wedge stop rod by pushing in on it. It should move in 1/4" with hand pressure and then spring back out. To obtain a proper setting, turn the wedge stop rod clockwise to reduce the gap and counter-clockwise to increase it. Adjust until the free travel is 1/4".

Hint:

If necessary, tap the wedge stop rod with a hammer to release a tight wedge.

3 Verify fifth wheel lock is activated



Verify that the pull handle is in the fully locked position (within 1" of the fifth wheel skirt).



IMPORTANT: Fontaine Training Videos are a great resource that can save time and improve the efficiency of your business. Subjects cover rebuilding a fifth wheel, coupling and uncoupling, maintenance and more. Check them out at <http://www.fifthwheel.com/fifth-wheel-videos.html> or scan this QR code with your mobile device.

Cold Weather Maintenance

No-Slack® 6000, 7000, 7000CC, NT and H7

Note:



Special precautions should be taken during extreme cold weather to ensure that the fifth wheel locking mechanism operates freely. At low temperatures ice and sludge can build up, and lubricants can become thick and binding. If you are in a region that experiences extreme and/or prolonged freezing temperatures (below 0°F) a thorough cleaning and de-greasing of the fifth wheel should be performed followed by lubrication with a less viscous lubricant. Following is the recommended cold weather procedure. (Refer to LT-072 for lubricating instructions under normal conditions).

WARNING! You should never attempt to couple a fifth wheel that has snow, ice, or debris in the throat area. Improper coupling can occur possibly resulting in serious injury or death.

- 1 Remove all snow, ice and debris from the fifth wheel especially focusing on the throat area; and remove all hardened lubricants that bind the locking mechanism.**

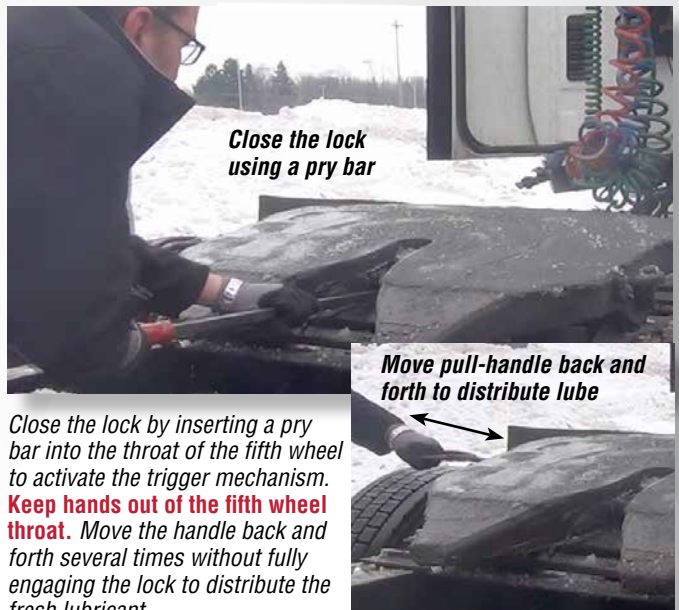


- 2 Lubricate top plate and locking mechanism.**



Ordinarily Fontaine recommends that a moly based lubricant (XHP 320/321 or equivalent) be used to lubricate a fifth wheel (see LT-072 for lubricating instructions). However, in extreme cold conditions a less viscous lubricant should be used, such as: 90-weight oil, diesel fuel, kerosene, motor oil, etc. (unless prohibited by government regulations). This will help ensure proper movement and lubrication of the locking mechanism in extreme cold weather. This less viscous lubricant can be distributed using a spray bottle. Be sure to spray the top surface of the fifth wheel and all moving components including the pull handle, throat area (jaw and wedge) and secondary lock. Fontaine recommends that you contact your specific lubricant manufacturer for guidelines on mixing compatibility of any lubricant.

- 3 After application of fresh lubricant, open and close the lock several times to make sure that it is operating freely.**



Close the lock by inserting a pry bar into the throat of the fifth wheel to activate the trigger mechanism. **Keep hands out of the fifth wheel throat.** Move the handle back and forth several times without fully engaging the lock to distribute the fresh lubricant.



Switch to Genuine Fontaine No-Slack®

We make it **EASY**

Get a complete assembly for the price of a top plate!

NEW 5-YEAR WARRANTY!

FREE FREIGHT!
Contiguous USA
Minimum \$2500 order

STANDARD DUTY

UP TO 60% OFF



NO-SLACK®

Stamped steel top plate
NT Series top plate
LWO slide bracket

Standard-duty on-highway
50,000 lbs vertical load
150,000 lbs drawbar pull

Part Number	Height	Travel
SLNTLW0675012	6.75	12
SLNTLW0675024	6.75	24
SLNTLW0775012	7.75	12
SLNTLW0775024	7.75	24

MODERATE DUTY

UP TO 50% OFF



NO-SLACK®

Cast steel steel top plate
7000 Series top plate
LWB slide bracket

Moderate-duty on/off-highway
55,000 lbs vertical load
150,000 lbs drawbar pull

Part Number	Height	Travel
SL7LWB675024	6.75	24
SL7LWB725024	7.25	24

HEAVY-DUTY

UP TO 40% OFF



NO-SLACK®

Cast steel steel top plate
H7 Series top plate
AWB slide bracket

Heavy-duty on/off-highway
62,500 lbs vertical load
150,000 lbs drawbar pull

Part Number	Height	Travel
SLH7AWB875024	8.75	24

- Each complete assembly includes top-plate, air slide bracket and slide rail.
- **Easily bolts to existing outboard angles for a quick, easy conversion.**
- Now you can run with the best for less. We make it **EASY** at the Fontaine Conversion Center.

www.fifthwheel.com/convert

Helpful On-Line Information

Scan these links, or go to fifthwheel.com

How to select fifth wheel



Choose "Support" menu, then "Choosing the right fifth wheel"

Operation/Maintenance Videos



Choose "Video" menu, then "No-Slack"

Troubleshooting Support



Choose "Support" menu, then "Troubleshooting flow charts"

Helpful Documents



Choose "Support" menu Then "Helpful information"

7000 Series
Cast steel top plate

Moderate-duty on/off-highway
55,000 lbs vertical load
150,000 lbs drawbar pull



www.fifthwheel.com • 800-874-9780

parts@fifthwheel.com

FontaineFifthWheel

@FifthWheelParts

